

451/461 2 and 3-Lite Sliding Window

Features:

- Beautiful, true brick mould exterior frame perimeter
- Aluminum-reinforced lock rail and meeting rails add strength
- Integrated glide rail allows easy sash opening and closing
- Available in XO or OX configurations
- Tandem rollers ride easily along friction free glide channel
- Integrated J-channel
(Series 461 available without J-channel)
- Insulated glass panels featuring warm-edge spacer system
- Half screen comes standard
- Charcoal fiberglass mesh screen
- Jamb depth: 3.868"
- Limited lifetime warranty

Custom Options:

- Low-E Glass
- Low-E Glass + Argon Gas
- Ultra Low-E Glass + Argon Gas
- 5/8" or 3/4" flat, 5/8" or 1" contoured, 1 1/8" simulated divided lite (SDL), 5/8" contoured valance grids available
- Paintable or stainable wood jamb extensions (4 9/16" and 6 9/16")
- Brass or brushed nickel locks
- Charcoal aluminum mesh screen
- Nine Exterior Painted Colors (white interior only)
- Custom sizes available

Product Performance:

AAMA 101 Results:

Window Size	AAMA Rating (psf)	Air (cfm/ft ²)	Water (psf)
70" x 49"	HS-R25	0.24	3.76

Product Dimensions:

Vinyl Wall Thickness:	0.065"
Glass Thickness:	0.750"
Jamb Depth:	3.250"
Nail Fin Setback:	2.1875"

Rough Opening:

Window Width + 1/2"
Window Height + 1/2"

2-Lite Slider Size Restrictions:

	Min:	Max:
Width	23 1/8"	83 1/8"
Height	17 3/4"	73 1/4"

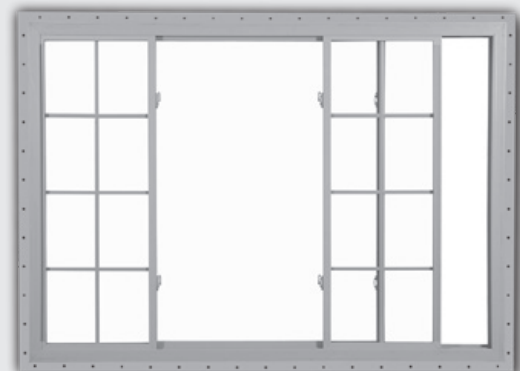
(Max. United Inches 132")

3-Lite Slider Size Restrictions:

	Min:	Max:
Width	60"	120"
Height	17 3/4"	73 1/4"

Width restrictions for 1/3, 1/3, 1/3 configuration:
54" 90"

(Max. United Inches 158")



451/461 2 and 3-Lite Sliding Window

Egress Formulas:

Egress Width $\geq 20"$ and Egress Height $\geq 24"$ and Egress Area ≥ 5.7 ft² required to meet egress.

Egress Width Formula = (Window Width/2) – 5.5625" (XX)
 (Window Width/3) – 5.6875" (XOX 1/3 1/3 1/3)
 (Window Width/4) – 2.5625" (XOX 1/4 1/2 1/4)

Egress Height Formula = Window Height – 5.375"

Egress Area Formula = (Egress Width x Egress Height)/144

Screen Formulas:

(Window Width/2) – 2.125" (1/3,1/3,1/3)
 (Window Width .3333) – 1.5" (1/4,1/2,1/4)
 (Window Width/4) – 1.375"
 Window Height – 4.25"

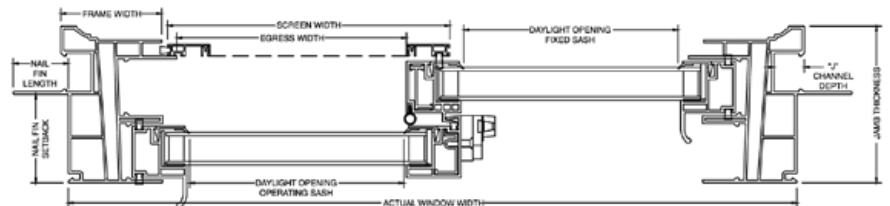
Series
451
Vertical
Diagram



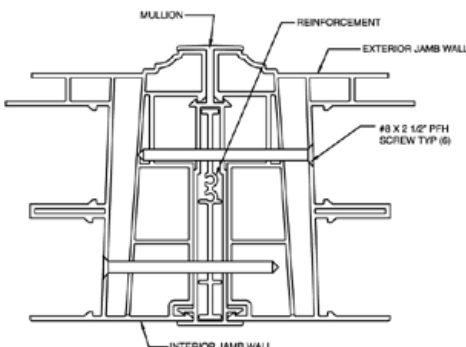
Series
461
Vertical
Diagram



Series 451 Horizontal Diagram



Mullion Assembly:



Series 461 Horizontal Diagram

