



THESE INSTALLATION INSTRUCTIONS ARE RECOMMENDATIONS ONLY. FOR MORE DETAILED INSTRUCTIONS APPLICABLE TO THE TYPE OF INSTALLATION THAT IS INTENDED FOR THIS PRODUCT, PLEASE REFER TO THE CURRENT VERSION OF THE MOST APPLICABLE OF THE FOLLOWING STANDARDS: AMERICAN ARCHITECTURAL MANUFACTURERS ASSOCIATION (AAMA) 2400, STANDARD PRACTICE FOR INSTALLATION OF WINDOWS WITH A MOUNTING FLANGE IN STUD FRAME CONSTRUCTION, ASTM INTERNATIONAL (ASTM) E 2112, STANDARD PRACTICE FOR INSTALLATION OF EXTERIOR WINDOWS, DOORS AND SKYLIGHTS, FLORIDA MANUFACTURERS ASSOCIATION/AMERICAN ARCHITECTURAL MANUFACTURERS ASSOCIATION (FMA/AAMA) 100, STANDARD PRACTICE FOR INSTALLATION OF WINDOWS WITH FLANGES OR MOUNTING FINIS IN WOOD FRAME CONSTRUCTION OR FLORIDA MANUFACTURERS ASSOCIATION/AMERICAN ARCHITECTURAL MANUFACTURERS ASSOCIATION (FMA/AAMA) 200, STANDARD PRACTICE FOR THE INSTALLATION OF WINDOWS WITH FRONTAL FLANGES FOR SURFACE BARRIER MASONRY CONSTRUCTION FOR EXTREME WIND/WATER CONDITIONS. INFORMATION MAY BE OBTAINED AT [WWW.AAMANET.ORG](http://WWW.AAMANET.ORG) OR [WWW.ASTM.ORG](http://WWW.ASTM.ORG).

FOR CONVENIENCE, AAMA 2400 IS PROVIDED FOR REFERENCE IN THE ATRIUM MEDIA SITE UNDER THE 'INSTALLATION' TAB.

**Typical Tools Required:** Safety glasses, tape measure, level, square, hammer, stapler, scissors or utility knife, flat blade screwdriver, pry bar, caulk gun and screw gun with Phillips driver bit.

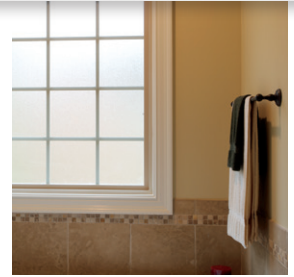
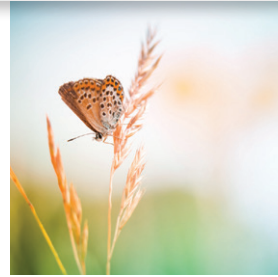
**Typical Materials Required:** Silicone sealant, installation anchors (screws or nails, as specified in the product's fastener schedule), low expansion polyurethane window and door foam, structural shims and flashing materials according to the flashing materials' manufacturer's recommendations and those of AAMA 2400 and/or ASTM 2112.

**Rough Opening Preparation:** Check that the rough opening is Level (in the horizontal plane), Plumb (in the vertical plane), True (across both planes) and Square (across the diagonals) before proceeding with installation of this product.

Measure the product to be installed prior to installation to insure appropriate clearance between product frame and rough opening.

The correct installation of the proper type of flashing to the rough opening is critical to maintaining the weather resistant barrier. Please follow the flashing manufacturer's recommended methods for flashing installation.

The joint between this fenestration product and any adjacent materials must be sealed with the appropriate type of sealant as recommended by the sealant manufacturer for the specific application or as required by the referenced Standards. Follow sealant manufacturer's directions and referenced Standards for proper joint geometry and sealing technique.



(continued)

**Unit Preparation:** Remove all shipping materials – wrapping, corner and/or side protectors – and aside the product in a safe place. Leave on any bottom protectors so as to minimize the possibility of damage to the bottom nailing fin until the unit is ready to be set into the rough opening. Leave on any adhesive labels for eventual removal by the owner.

**Installation Into Rough Opening:** Making sure that sashes or operating panels are closed and locked during installation, center this product into the rough opening and check for plumb, level, square and true. This product should only be secured in the opening when it is plumb, level, square and true. Follow the appropriate fastener schedule for fastener size and spacing (consult FBC or TDI websites for additional information if applicable). Fasteners should be selected and installed to secure the weight of this product and to ensure compliance with applicable building codes and ordinances relative to wind loads, temperature variations and other local conditions. If this product is being fastened through the jambs, appropriate shims should be placed between the window frame and the adjacent rough frame materials at the fastening points in order to prevent deformation of or damage to the window frame or components and to ensure proper operation of the window. Projected windows are not self-supporting and require supports and bracing – see those products' installation instructions for details.

Once the product is secured into the rough opening, check for ease of operation and to ensure it is in good working condition. It is important that drainage/weep holes remain unobstructed. Clean using only mild detergents and non-etching cleaning agents. Do not use hydrocarbon fuels or solvents, paint removers, aggressive alkaline, acidic or abrasive cleaners, cleaners containing trisodium phosphate, organic solvents or strong soaps or detergents to clean this product.



**MANUFACTURER MAKES NO WARRANTY, EXPRESSED OR IMPLIED, WITH RESPECT TO THESE INSTRUCTIONS OR ANY THIRD PARTY INSTRUCTIONS, AND MANUFACTURER SHALL NOT BE LIABLE FOR ANY DAMAGE OR LIABILITY THAT MAY ARISE IN CONNECTION WITH THE INSTALLATION OF THIS PRODUCT NOT PERFORMED BY MANUFACTURER.**

